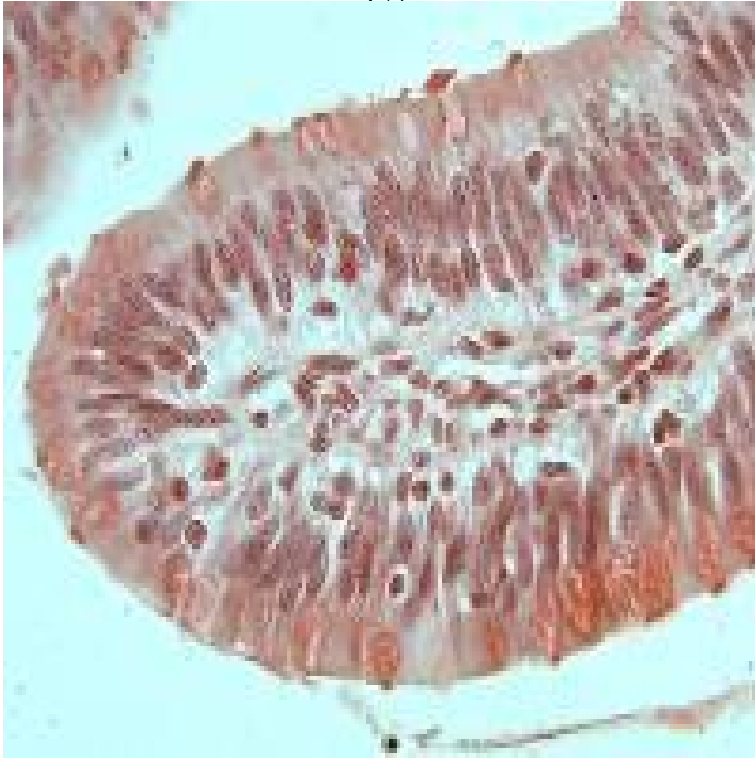


Vertebrate Histology



Vertebrate Histology. Br Med J ; 1 doi: marceletsafontaine.com a (Published 05 April) Cite this as: Br Med J ;The online version of An Atlas of Comparative Vertebrate Histology by Donald B. McMillan and Richard J. Harris on marceletsafontaine.com, the world's leading.Study of structure/function relationships in vertebrate tissues, organs and organ systems.Vertebrate Histology Melissa Cavallin Johnson, Carrollton, 01, Download Syllabus [PDF] Vertebrate Histology Melissa Cavallin Johnson, Carrollton, Full text. Full text is available as a scanned copy of the original print version. Get a printable copy (PDF file) of the complete article (K), or click on a page.Bisc Vertebrate Histology. Biology. This course covers the structure of principal tissue types and organ systems. (3 lecture, 2 lab hours). 4 Credits.Learn vertebrate histology with free interactive flashcards. Choose from different sets of vertebrate histology flashcards on Quizlet.An introduction to the cytology and morphology of vertebrate cells and tissues, including examination of the four major histological tissues: epithelium.The organization of the basic tissues into organs and organ systems in vertebrates, with an emphasis on non-human mammals, fish, reptiles, amphibians, birds.BIOC21H3 Vertebrate Histology: Cells and Tissues. A study of the structure of cells and the various tissue types which make up the vertebrate body; epithelial.HMBH1: Vertebrate Histology and Histopathology. Hours: 24L/36P. Laboratory and lecture course studying the structure of the cell, various tissues and.BIO - Vertebrate Histology. Credits, 5 sem. hrs. Prerequisite(s): Graduate standing. This course will not count towards the Master of Biology Biological.ZOO C - Vertebrate Histology class wall and course overview (exams, quizzes, flashcards, and videos) at Central Florida (UCF).BIO - Vertebrate Histology class wall and course overview (exams, quizzes, flashcards, and videos) at Mississippi State (MSU).Comparative Vertebrate Histology. Donald I. Patt and Gail R. Patt. Harper and Row, New York, x + pp., illus. \$ See allHide authors and.COMPARATIVE VERTEBRATE HISTOLOGY. ANAT/BIOL JANUARY- APRIL When and where: Lectures: Wednesday/Friday - AM.18 - Vertebrate Histology. In this lab exercise, you observed the diversity of vertebrate tissues. You should know their names and the major tissue type to which.Comparative Vertebrate Histology. A comparison of vertebrate anatomy at the tissue level and its evolutionary and phylogenetic significance. Even Fall.Comparative Vertebrate Histology [Donald I. Patt, Gail R. Patt] on marceletsafontaine.com * FREE* shipping on qualifying offers.ZOO - Comparative Vertebrate Histology. Credit Hours: 4. Class Hours: 3. Lab and Field Work Hours: 1. Contact Hours: 4. Prerequisite(s): A minimum.

[\[PDF\] Sol Whites Official Baseball Guide](#)

[\[PDF\] Almacen de recetas escogidas y probadas by Anonymous \(Spanish Edition\)](#)

[\[PDF\] Das kleine Drachenhandbuch: Verbinde dich mit deinem Seelenbegleiter \(German Edition\)](#)

[\[PDF\] Family Therapy: An Overview](#)

[\[PDF\] The Healers](#)

[\[PDF\] The Cambridge Companion to Foucault \(Cambridge Companions to Philosophy\)](#)

[\[PDF\] The Reign of Terror: Re-Thinking the 9/11 Conspiracy](#)